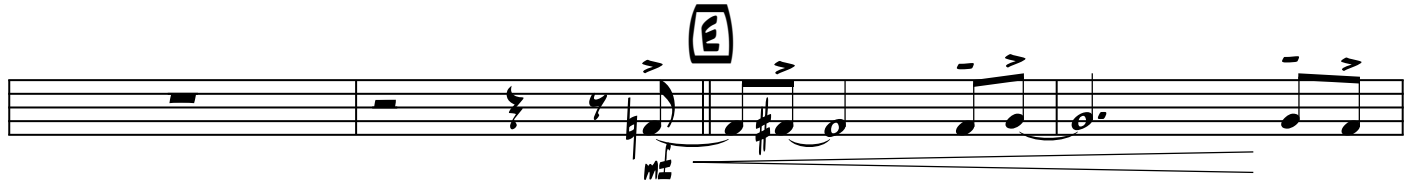
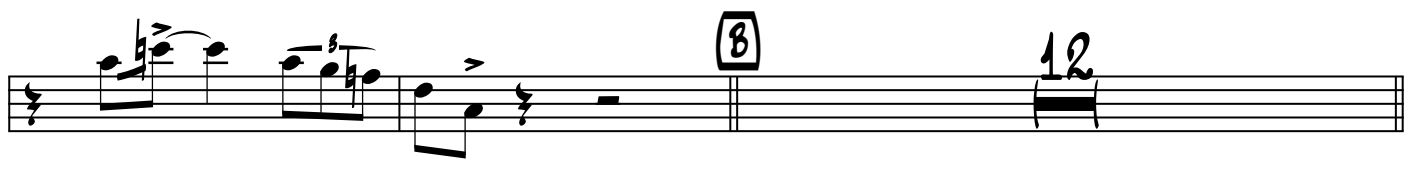
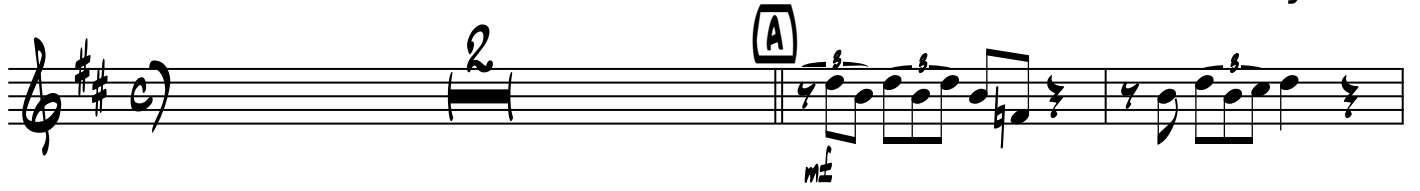


KANSAS CITY

arr. by HERO



Musical staff with treble clef and key signature of two sharps (F# and C#). It contains two measures of whole notes: the first measure is marked with a circled '10' and the second with a circled '12'. Above the staff, a circled 'F' indicates the chord.

Musical staff starting with a circled 'G' chord. It contains a measure of a whole note marked with a circled '11', followed by a series of eighth notes with accents and slurs. A circled 'H' is placed above the staff. A dynamic marking of *mp* is present below the notes.

Musical staff continuing the eighth-note melodic line from the previous staff.

Musical staff continuing the eighth-note melodic line, featuring slurs and accents. A dynamic marking of *mp* is present at the end of the staff.

Musical staff starting with a circled 'I' chord. It contains a series of eighth notes with accents and slurs.

Musical staff continuing the eighth-note melodic line.

Musical staff starting with a circled '2' chord, followed by a circled 'J' chord. It contains eighth notes with accents and slurs. A dynamic marking of *mf* is present below the notes.

Musical staff continuing the eighth-note melodic line.

Musical staff continuing the eighth-note melodic line.

Musical staff starting with a circled 'K' chord. It contains eighth notes with accents and slurs. A dynamic marking of *mf* is present below the notes.

Musical score for 320 ALT SAX, Kansas City 3. The score consists of three staves of music in treble clef with a key signature of three sharps (F#, C#, G#). The first staff begins with a whole rest, followed by a series of eighth and sixteenth notes with accents and slurs. The second staff continues with similar rhythmic patterns, including slurs and accents. The third staff concludes the piece with a final note and a double bar line.