



DRUM SET

Musical staff with a bass clef. It contains a measure with a '2' in a box above it, followed by notes with accents and a measure with an 'F' in a box above it.

Musical staff with rhythmic slashes, indicating a drum pattern.

Musical staff with a 'G' in a box above it, followed by notes with accents and rhythmic slashes.

Musical staff with notes and rhythmic slashes.

Musical staff with a 'H' in a box above it, followed by notes and rhythmic slashes.

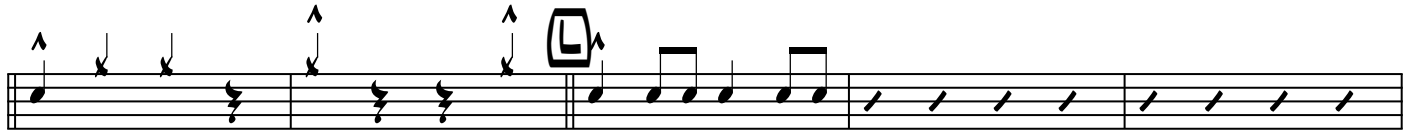
Musical staff with a 'I' in a box above it, followed by notes and rhythmic slashes.

Musical staff with rhythmic slashes.

Musical staff with a 'J' in a box above it, followed by notes and rhythmic slashes.

Musical staff with a 'K' in a box above it, followed by notes and rhythmic slashes.

DRUM SET



Q

Q: Musical notation for drum set part Q. The first staff is a bass line with a sequence of eighth notes, followed by a rest. The second staff is a snare line with a series of eighth notes and two accents marked with an upward-pointing arrow (^) and a downward-pointing arrow (v).

R

♩ = 75

S

R: Musical notation for drum set part R. It includes a tempo marking of ♩ = 75. The notation features a bass line with eighth notes and a snare line with eighth notes and accents. A section labeled 'S' contains a complex snare pattern with many 'x' marks and accents.

T

U

T: Musical notation for drum set part T. It features a double bar line and a section labeled 'U' with a complex snare pattern. The notation includes various drum symbols and accents.