

DRUMS

JEANNINE

Phil Kelly "Convergence Zone"

♩ = 200

(PIANO SOLO)

ARR. BY HERO

First staff of music with bass clef, common time signature, and initial drum notation.

Second staff of music, including a measure marked with a circled 'A'.

Third staff of music, consisting of five measures with slash symbols.

Fourth staff of music, including a measure marked with a circled 'B'.

Fifth staff of music, consisting of five measures with slash symbols.

Sixth staff of music, including a measure marked with a circled 'C'.

Seventh staff of music, including a measure marked with a circled 'D'.

Eighth staff of music, consisting of five measures with slash symbols.

Ninth staff of music, including a measure marked with a circled 'E'.

Tenth staff of music, including a measure marked with a circled 'F'.

Eleventh staff of music, concluding the piece with various drum notations.

G

Musical staff with bass clef, a G chord symbol above, and a sequence of notes and rests.

Musical staff with five measures, each containing a slash mark.

H

Musical staff starting with a sequence of notes marked with 'x' and followed by four measures with slash marks.

I (TRP. SOLO)

Musical staff with a sequence of notes and rests, followed by a sequence of notes marked with 'x', and a slash mark.

Musical staff with five measures, each containing a slash mark.

J

Musical staff with a sequence of notes marked with 'x' and followed by three measures with slash marks.

K

Musical staff with four measures with slash marks, followed by a sequence of notes marked with 'x'.

Musical staff with five measures, each containing a slash mark.

L

Musical staff with two measures with slash marks, followed by a sequence of notes and rests, and another sequence of notes and rests.

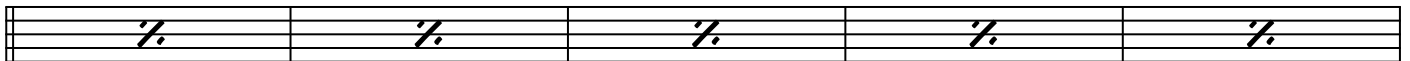
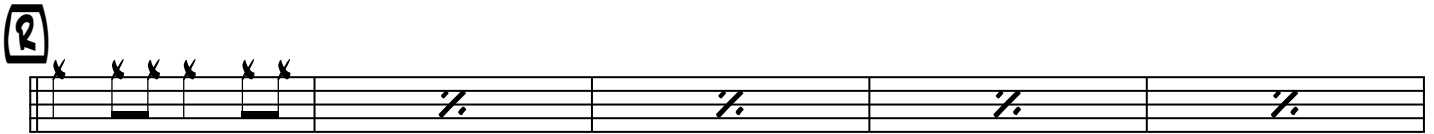
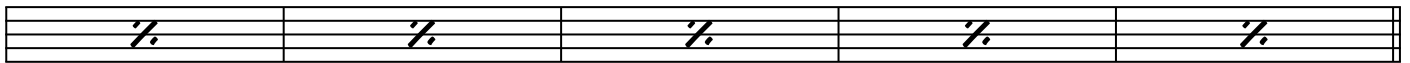
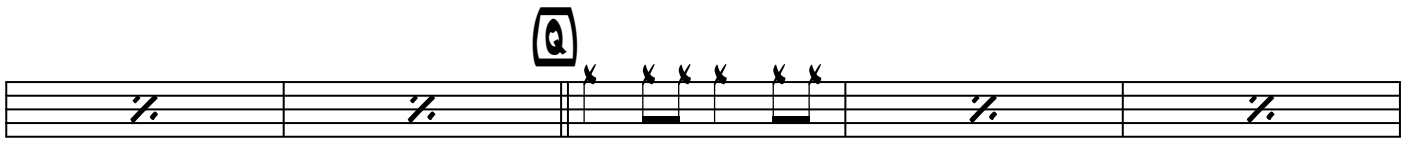
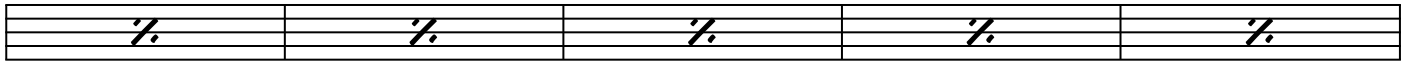
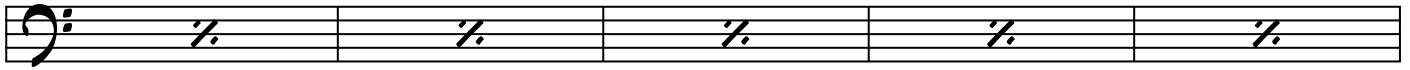
Musical staff with a sequence of notes and rests, followed by a sequence of notes marked with 'x', and three measures with slash marks.

M

Musical staff with a sequence of notes marked with 'x' and followed by four measures with slash marks.

N (TRB. SOLO)

Musical staff with three measures with slash marks, followed by a sequence of notes marked with 'x', and a slash mark.



Drum notation on a bass clef staff. It starts with a double bar line, followed by a measure with a circled 'V' above it and a series of six eighth notes marked with 'x'. The rest of the staff contains five measures, each with a slash indicating a rest.

Five empty musical staves, each containing a slash to indicate a rest.

(W) (T. SAX SOLO)

Drum notation on a treble clef staff. It starts with a double bar line, followed by a measure with a circled 'W' above it and a series of six eighth notes marked with 'x'. The rest of the staff contains four measures, each with a slash indicating a rest.

Drum notation on a treble clef staff. It starts with a double bar line, followed by a measure with a circled 'X' above it and a series of six eighth notes marked with 'x'. The rest of the staff contains four measures, each with a slash indicating a rest.

Five empty musical staves, each containing a slash to indicate a rest.

Drum notation on a treble clef staff. It starts with a double bar line, followed by a measure with a circled 'Y' above it and a series of six eighth notes marked with 'x'. The rest of the staff contains four measures, each with a slash indicating a rest.

Five empty musical staves, each containing a slash to indicate a rest.

Musical notation on a treble clef staff. It begins with a whole note, followed by a quarter note, an eighth note, and a quarter note. This is followed by a measure with a series of six eighth notes marked with 'x', and then a measure with a slash indicating a rest.

(AA)

Drum notation on a treble clef staff. It starts with a double bar line, followed by a measure with a circled 'AA' above it and a series of six eighth notes marked with 'x'. The rest of the staff contains four measures, each with a slash indicating a rest.

Five empty musical staves, each containing a slash to indicate a rest.

(AB)

Drum notation on a treble clef staff. It starts with a double bar line, followed by a measure with a circled 'AB' above it and a series of six eighth notes marked with 'x'. The rest of the staff contains four measures, each with a slash indicating a rest.

Drum notation on a treble clef staff. It starts with a double bar line, followed by a measure with a circled 'AC' above it and a series of six eighth notes marked with 'x'. The rest of the staff contains four measures, each with a slash indicating a rest.

(AD)

(AE)

(AF)

(AG)

(AH)

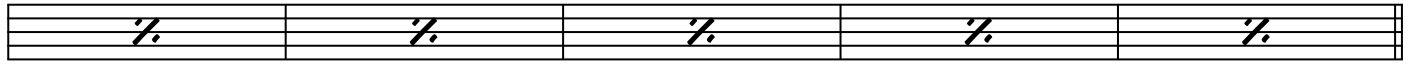
(AI)

(AJ)

6 DRUMS

AK

JEANNINE



AL

