

4TH TROMBONE

DOXY

arr. by HERO

1

A 8 B

5 C 8

D

9

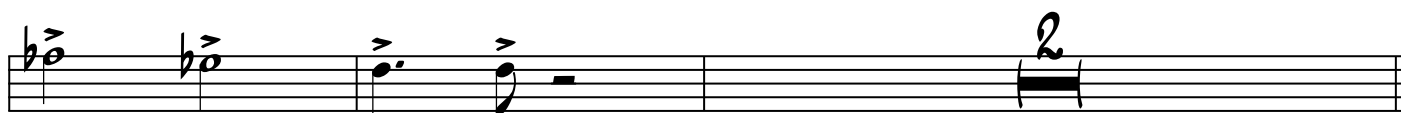
F 8 G 8

H 8 I 8

J 8 K 2

3 L

4TH TROMBONE



4TH TROMBONE

DOXY 3

Musical notation for the 4th Trombone part, measures 1-4. The notation is in bass clef with a key signature of one flat (B-flat). The first measure contains a whole rest. The second measure contains a half note with a stem and a flat sign, marked with an accent (>) and the dynamic marking *mf*. The third measure contains a quarter note with a stem and a flat sign, marked with an accent (>). The fourth measure contains a quarter note with a stem and a flat sign, marked with an accent (>). The fifth measure contains a half note with a stem and a flat sign, marked with an accent (>). The sixth measure contains a whole note with a stem and a flat sign, marked with an accent (>). The seventh measure contains a whole note with a stem and a flat sign, marked with an accent (>). The eighth measure contains a whole note with a stem and a flat sign, marked with an accent (>).