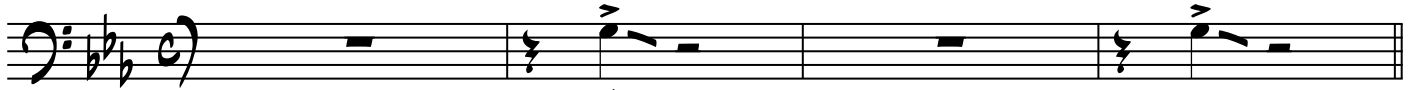


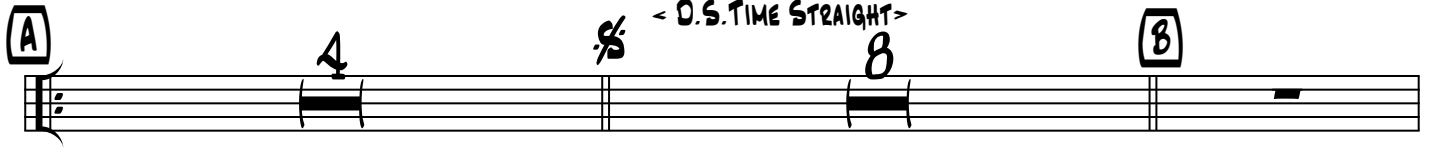
4TH TROMBONE

TOO DARN HOT

arr. by HERO



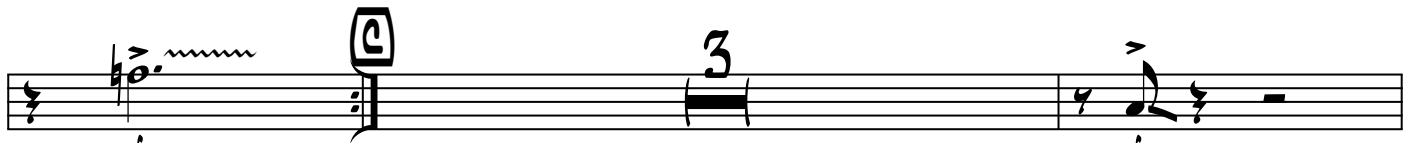
mf



<D.S. TIME STRAIGHT>

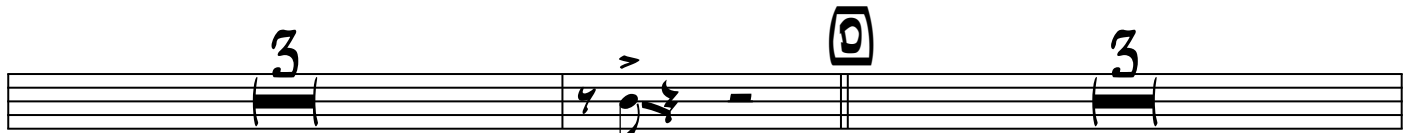


mf



f

f

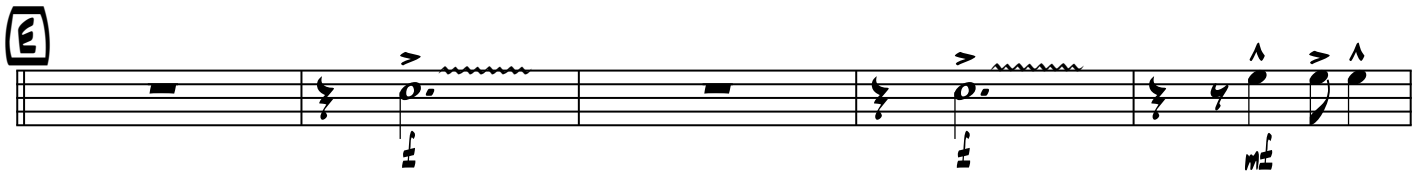


mf

TO CODA



f



mf



mf



f

mf

4TH TROMBONE

TOO DARN HOT 2

Musical staff with notes, accents, and a circled 'G' above a measure.

Musical staff with notes, accents, and a circled '3' above a measure.

Musical staff with a circled 'H' above a measure and a circled '4' above a measure.

(D.S. AL CODA)

Musical staff with a circled '3' above a measure.

Musical staff with notes, accents, and a circled '1' above a measure.

Musical staff with notes, accents, and a circled '1' above a measure.

Musical staff with notes, accents, and a circled '1' above a measure.

Musical staff with notes, accents, and a circled '10' above a measure.

Musical staff with notes, accents, and a circled '10' above a measure.

Musical staff with notes, accents, and a circled '10' above a measure.