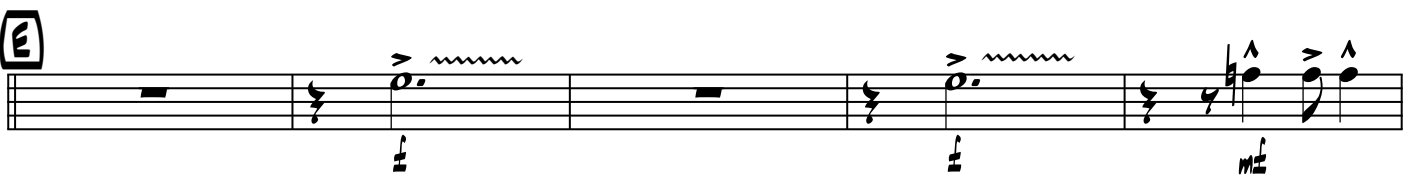
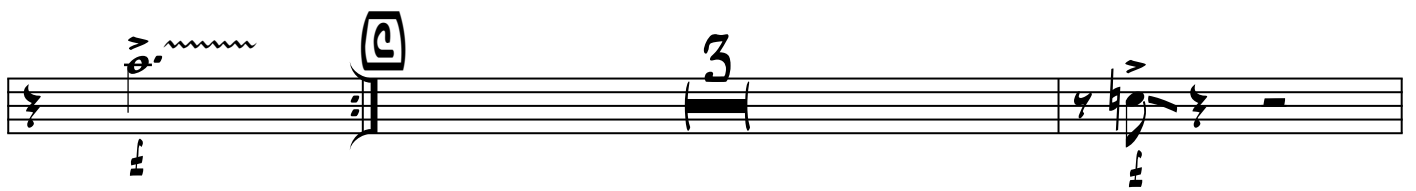
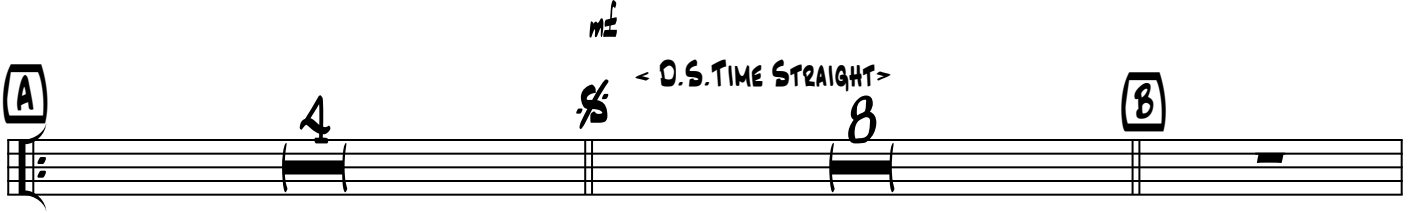


TOO DARN HOT

arr. by HERO



320 TROMBONE

TOO DARN HOT 2

Musical staff with bass clef, key signature of two flats, and a circled 'G' above the staff. It contains a triplet of eighth notes and a dynamic marking of *mf*.

Musical staff with a complex melodic line featuring eighth and sixteenth notes, slurs, and accents.

Musical staff with a circled 'H' above the staff, a 4-measure rest, and the text **(D.S. AL CODA)** below.

Musical staff with a circled '3' above the staff and a 3-measure rest.

Musical staff with a series of eighth notes, slurs, and accents, starting with a dynamic marking of *mf*.

Musical staff with eighth notes, slurs, and accents, ending with a circled '1' above the staff.

Musical staff with eighth notes, slurs, and accents, including a wavy line above a note, and a dynamic marking of *mf*.

Musical staff with a circled '10' above the staff, a circled '1' above the staff, and eighth notes with slurs and accents.

Musical staff with eighth notes, slurs, and accents, including a dynamic marking of *mf*.

Musical staff with eighth notes, slurs, and accents, ending with a dynamic marking of *f*.