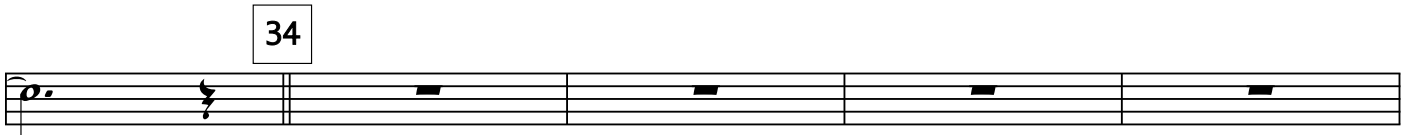
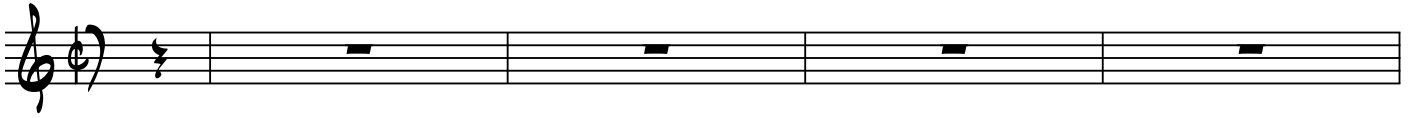


4TH TENOR SAX

TUXED JUNCTION

arr. by HERO



4TH TENOR SAX

TUXED JUNCTION 2

52

Musical staff with treble clef. Measure 52 is marked with a box containing the number '52'. A '4' is written above the staff, indicating a four-measure rest.

Empty musical staff.

62

Musical staff with treble clef. Measure 62 is marked with a box containing the number '62'. A '2' is written above the staff, indicating a two-measure rest. The music begins with a quarter rest, followed by a quarter note G4, a quarter note A4, and a quarter note B4. The dynamic marking *mp* is written below the first note. The staff continues with a half note G4, a quarter note F#4, a quarter note E4, a quarter note D4, a quarter note C4, a quarter note B3, and a quarter note A3.

Musical staff with treble clef. Measure 63 begins with a quarter note G4, a quarter note A4, a quarter note B4, and a quarter note C5. The staff continues with a half note G4, a quarter note F#4, a quarter note E4, a quarter note D4, a quarter note C4, a quarter note B3, and a quarter note A3.

70

Empty musical staff.

Empty musical staff.

80

Musical staff with treble clef. Measure 80 begins with a quarter rest, followed by a quarter note G4, a quarter note A4, a quarter note B4, and a quarter note C5. The staff continues with a half note G4, a quarter note F#4, a quarter note E4, a quarter note D4, a quarter note C4, a quarter note B3, and a quarter note A3.

Musical staff with treble clef. Measure 81 begins with a quarter note G4, a quarter note A4, a quarter note B4, and a quarter note C5. The staff continues with a half note G4, a quarter note F#4, a quarter note E4, a quarter note D4, a quarter note C4, a quarter note B3, and a quarter note A3.