

# BASS

# SUMMER TIME

arr. by HERO

**A** ♩=140 EVEN

Chords: G<sup>b</sup>7, E m6, A m7(♭5), G dim, A m7(♭5), C<sup>7</sup>

Chord: C<sup>7</sup>

♩=100

Chords: F<sup>7</sup>, B<sup>b</sup>m6, C m7(♭5), B<sup>b</sup>m7, F<sup>7</sup>

Chords: G m7(♭5), F<sup>7</sup>, G m7(♭5), F<sup>7</sup>, B<sup>b</sup>m6, F<sup>7</sup>, B<sup>b</sup>m6, F<sup>7</sup>

**B** ♩=80

Chords: B<sup>b</sup>m6, F<sup>7</sup>, B<sup>b</sup>m6, F<sup>7</sup>, B<sup>b</sup>m6, E<sup>b</sup>m7, G<sup>b</sup>Maj7, G dim

Chords: F<sup>7</sup>, C<sup>7</sup>, F<sup>7</sup>, F<sup>7</sup>, B<sup>b</sup>m6, F<sup>7</sup>, B<sup>b</sup>m6, F<sup>7</sup>

Chords: B<sup>b</sup>m6, F<sup>7</sup>, B<sup>b</sup>m6, E<sup>b</sup>7, B<sup>b</sup>m7, E<sup>b</sup>7, A<sup>b</sup>7sus4

Chords: B<sup>b</sup>m6, B<sup>b</sup>m(maj7), E<sup>b</sup>7, F<sup>7</sup>

**C** Chords: B<sup>b</sup>m6, F<sup>7</sup>, B<sup>b</sup>m6, F<sup>7</sup>, B<sup>b</sup>m6, F<sup>7</sup>, B<sup>b</sup>m6, B<sup>b</sup>7

# 2 BASS

# SUMMER TIME

Musical score for Bass part of "Summer Time". The score is written in bass clef with a key signature of three flats (B-flat, E-flat, A-flat) and a common time signature. The music consists of ten staves of notation with various chords and melodic lines. Chords are indicated by letters and numbers above or below the notes. Some chords are enclosed in boxes: a circle around a D chord on the fourth staff, a square around an E chord on the fifth staff, and a square around an F chord on the tenth staff. The tempo is marked as ♩ = 140 EVEN.

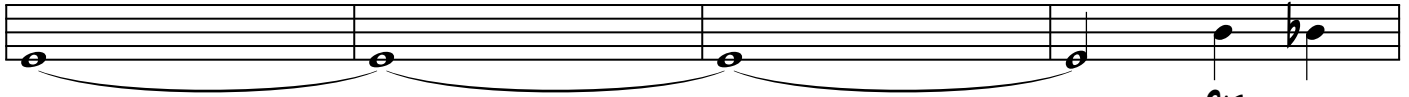
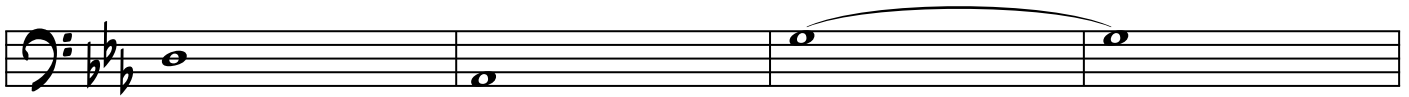
Chords and markings in the score:

- Staff 1: E<sup>b</sup>m7, G<sup>b</sup>Maj7, G<sup>dim</sup>, F7
- Staff 2: B<sup>b</sup>m6, F7, B<sup>b</sup>m6, F7, B<sup>b</sup>m6, F7, B<sup>b</sup>m6, E<sup>b</sup>7
- Staff 3: B<sup>b</sup>m7, E<sup>b</sup>7, A<sup>b</sup>7sus4, E<sup>b</sup>7, A<sup>b</sup>7sus4
- Staff 4: D<sup>b</sup>7, G<sup>b</sup>13, B Maj7, F7, D (circled)
- Staff 5: Gm7(♭5), B<sup>b</sup>m7(♭5), Cm7(♭5), E<sup>b</sup>m7(♭5), Dm7(add4)<sub>♭7</sub>, Cm6, G7, A m7(♭5), B<sup>b</sup>Maj7, Dm7(♭5), Gm7, D (squared)
- Staff 6: Cm7, G7, Cm6, G7, Cm7, G7, Cm6, Fm7
- Staff 7: A<sup>b</sup>Maj7, Fm7, G7, D7sus4, D<sup>b</sup>7, Cm6, G7
- Staff 8: Cm7, G7, Cm6, G7, Cm7, F7, Cm7
- Staff 9: F7, B<sup>b</sup>7sus4, Cm6, F7, B<sup>b</sup>7sus4, E<sup>b</sup>Maj7, A<sup>b</sup>6
- Staff 10: D<sup>b</sup>Maj7, G7sus4, F (squared), ♩ = 140 EVEN, A dim

# BASS

SUMMER TIME

3



RIT.

cm6

