

DRUMS

LOVE IS A MANY-SPLENDORED THING

arr.byHERO

Musical notation for the first staff, featuring a bass clef, a common time signature, and a melodic line with a 'STRAIGHT' marking.

Musical notation for the second staff, showing a series of rhythmic patterns with 'x' marks above the notes.

9 SWING

Musical notation for the third staff, starting with a circled 'x' and followed by a series of rhythmic patterns.

Musical notation for the fourth staff, consisting of a series of rhythmic patterns.

17

Musical notation for the fifth staff, consisting of a series of rhythmic patterns.

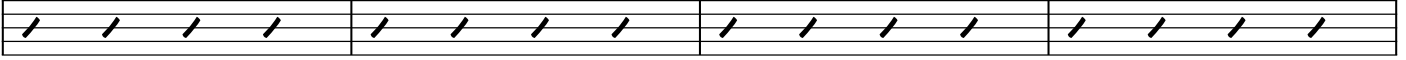
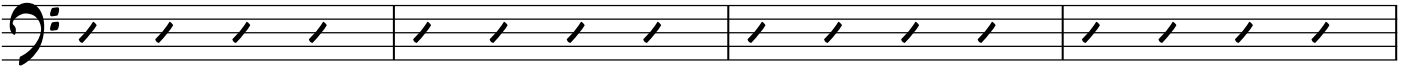
Musical notation for the sixth staff, consisting of a series of rhythmic patterns.

25

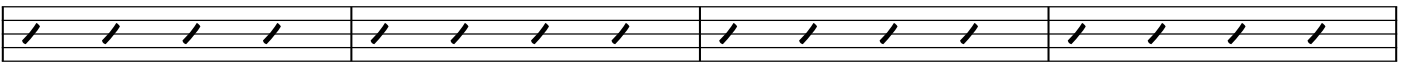
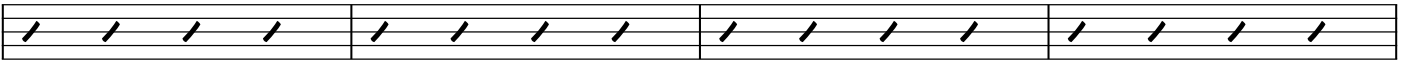
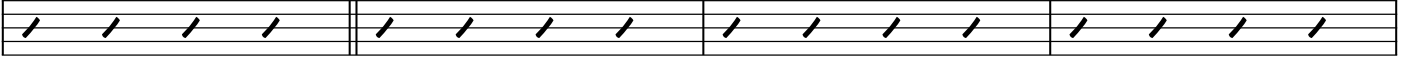
Musical notation for the seventh staff, consisting of a series of rhythmic patterns.

Musical notation for the eighth staff, consisting of a series of rhythmic patterns.

33



41



53

