

DRUMS

ISN'T SHE LOVELY

The Bill Holman Band

arr. by HERO

First system of drum notation. It begins with a bass clef and a 3/4 time signature. The notation consists of a series of eighth notes with beams, some marked with a flat symbol (b). A section labeled 'A' is enclosed in a box and contains a sequence of asterisks representing drum hits.

Second system of drum notation, consisting of five measures, each containing a single slash (/) to indicate a drum hit.

Third system of drum notation. It starts with a section labeled 'B' in a box, followed by eighth notes with beams and asterisks. The system concludes with five measures, each containing a slash (/).

Fourth system of drum notation. It features eighth notes with beams and asterisks, including a section labeled 'C' in a box. The system ends with five measures, each containing a slash (/).

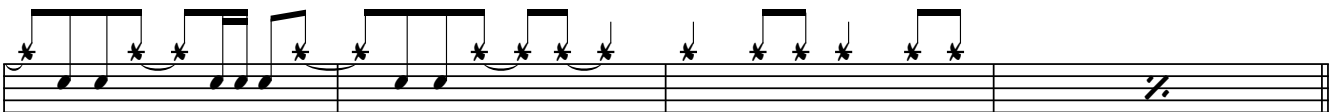
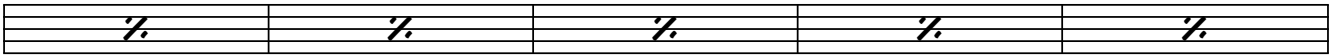
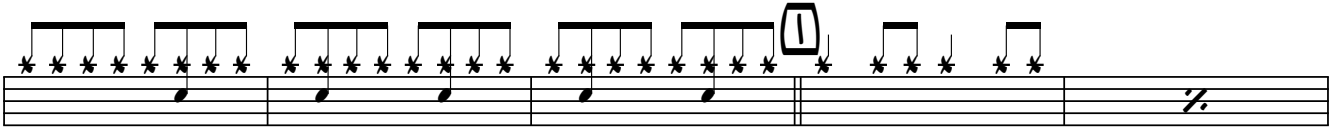
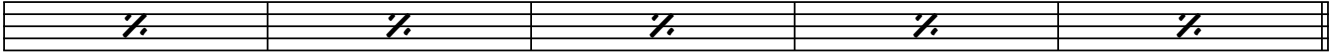
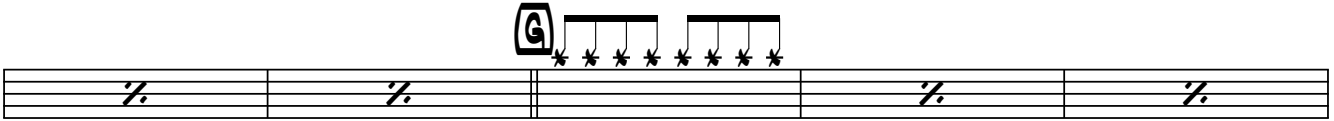
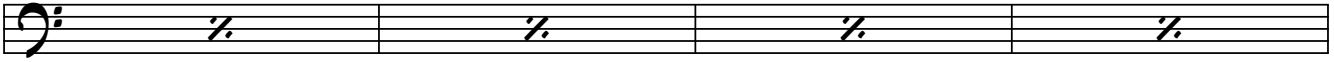
Fifth system of drum notation. It begins with eighth notes and asterisks, followed by five measures, each containing a slash (/).

Sixth system of drum notation. It includes a section labeled 'D' in a box, followed by eighth notes and asterisks. The system concludes with five measures, each containing a slash (/).

Seventh system of drum notation. It features eighth notes with beams and asterisks, some with accents (>). The system ends with five measures, each containing a slash (/).

Eighth system of drum notation. It starts with a section labeled 'E' in a box, followed by eighth notes and asterisks. The system concludes with five measures, each containing a slash (/).

Ninth system of drum notation. It includes a section labeled 'F' in a box, followed by eighth notes and asterisks. The system concludes with five measures, each containing a slash (/).



DRUMS

(PIANO SOLO)

L

↓ * ↓ * * * ↓ * * *

M

N

O

P

Q

↓ * ↓ * * * ↓ * * *

DRUMS

ISN'T SHE LOVELY 4

The drum notation consists of ten staves. The first staff begins with a bass clef and a key signature of one flat. The notation includes various rhythmic patterns such as eighth and sixteenth notes, often with asterisks indicating accents. Circled letters 'R', 'S', 'T', and 'U' are placed above specific measures to mark key points in the drum part. The patterns include syncopated rhythms and complex sixteenth-note runs. The notation is presented in a standard musical score format with stems and beams connecting notes.

