

DRUMS

DAMP BROWN PLACES

arr. by HERO

♩ = 176

SOLO

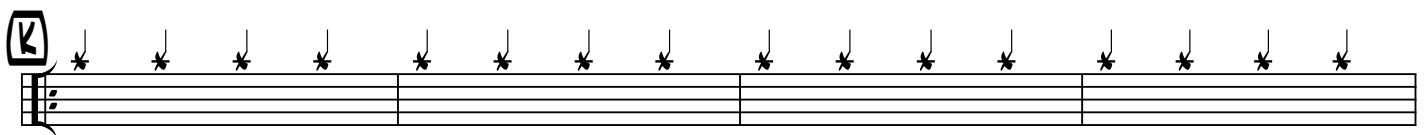
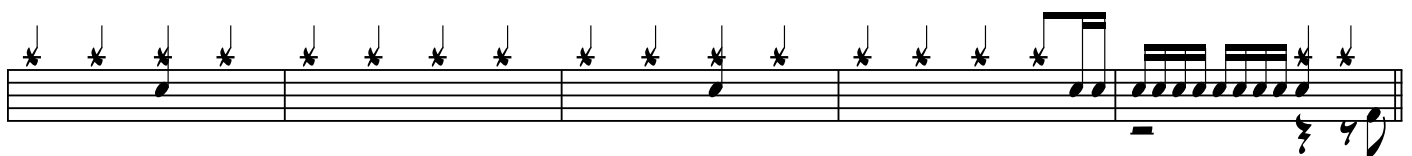
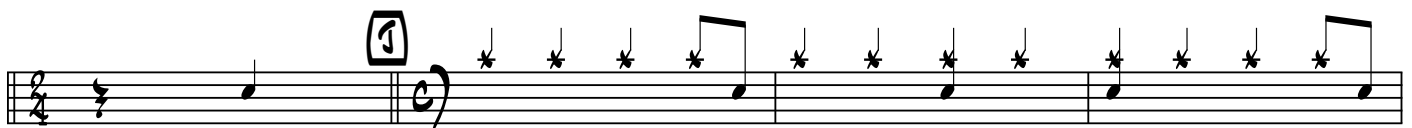
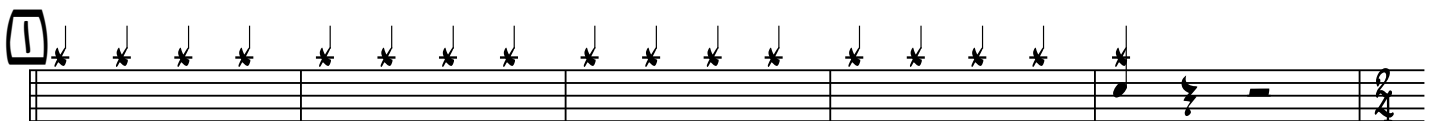
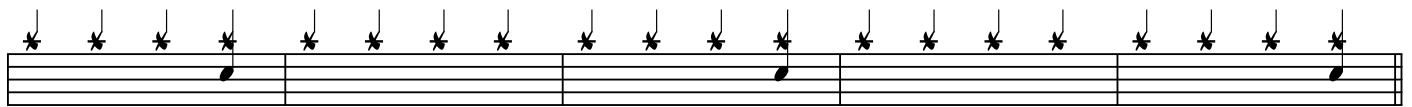
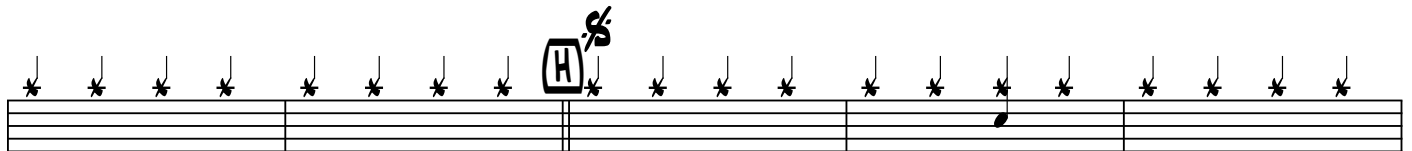
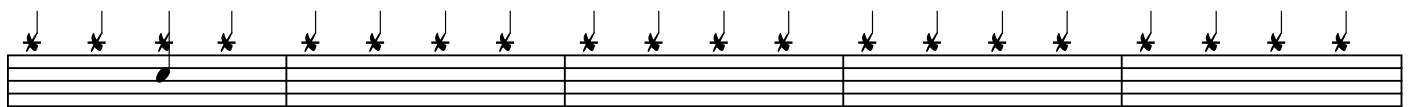
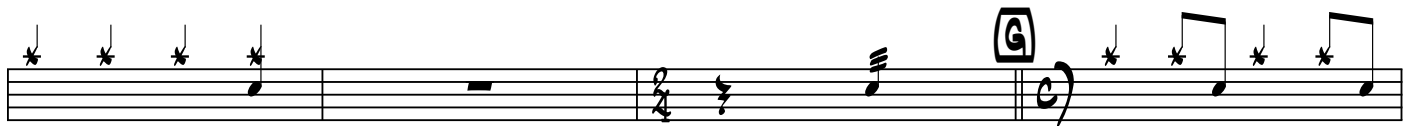
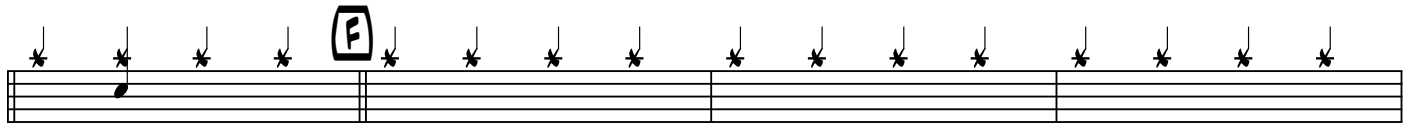
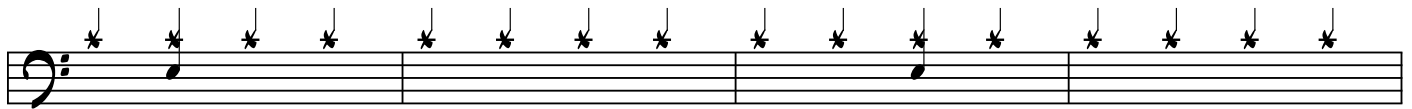
A

B

C

E

DRUMS



DRUMS

A musical staff with a bass clef. The first three measures contain a series of asterisks above the staff. The fourth measure contains a musical note with an asterisk above it, followed by a quarter rest and another note with an asterisk above it.

A musical staff with a circled letter 'L' at the beginning. The first three measures contain a series of asterisks above the staff. The fourth measure contains a musical note with an asterisk above it, followed by a quarter rest and another note with an asterisk above it.

A musical staff with a circled letter 'M' at the beginning. The first measure contains a quarter rest. The second measure contains a musical note with an asterisk above it, followed by a quarter rest and another note with an asterisk above it. The third and fourth measures contain a series of asterisks above the staff.

A musical staff containing a series of asterisks above the staff across all four measures.

A musical staff with a circled letter 'N' at the beginning. The staff contains a series of asterisks above the staff across all four measures.

A musical staff containing a series of asterisks above the staff across all four measures. A circled letter 'O' is placed above the staff in the third measure.

A musical staff containing a series of asterisks above the staff across all four measures.

A musical staff with a circled letter 'P' at the beginning. The first measure contains a series of asterisks above the staff. The second measure contains a slur over a group of notes, followed by a quarter rest and another note with an asterisk above it. The third and fourth measures contain a series of asterisks above the staff.

A musical staff containing a series of asterisks above the staff across all four measures. A circled letter 'Q' is placed above the staff in the third measure.

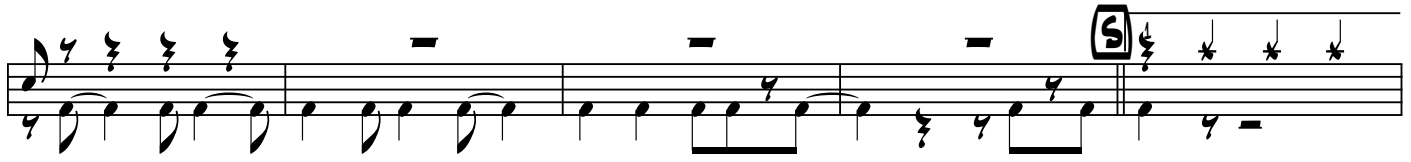
A musical staff containing a series of asterisks above the staff across all four measures. A circled number '2' is placed above the staff in the third measure.

DRUMS

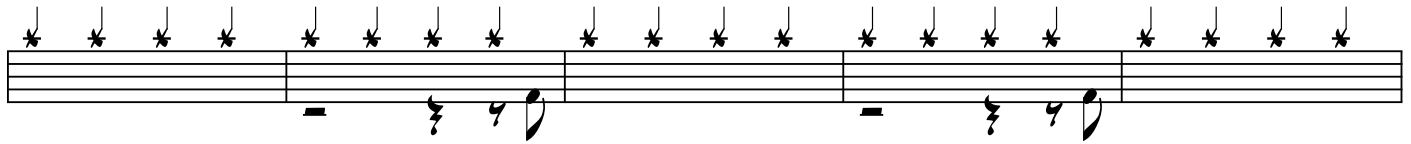
2



A musical staff with a bass clef and a repeat sign. Above the staff are 16 asterisks. The staff contains a whole rest followed by a quarter note, a quarter note, and a quarter note.



A musical staff with a treble clef. It contains a series of eighth notes, followed by a whole rest, and then a circled '5' above a quarter note.




A musical staff with a bass clef and a repeat sign. Above the staff are 16 asterisks. The staff contains a whole rest followed by a quarter note, a quarter note, and a quarter note.



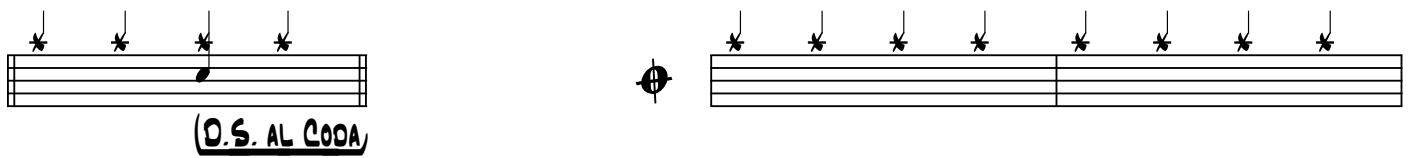
A musical staff with a bass clef and a repeat sign. Above the staff are 16 asterisks. A circled '1' is placed above a quarter note in the middle of the staff.



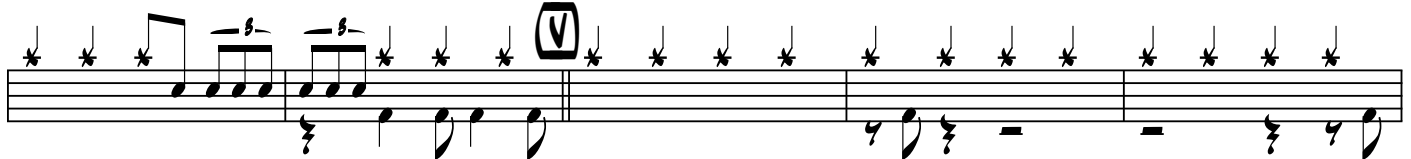
A musical staff with a bass clef and a repeat sign. Above the staff are 16 asterisks. The staff contains a whole rest followed by a quarter note, a quarter note, and a quarter note.



A musical staff with a bass clef and a repeat sign. Above the staff are 16 asterisks. A circled 'U' is placed above a quarter note in the middle of the staff.



A musical staff with a bass clef and a repeat sign. Above the staff are 4 asterisks. Below the staff is the text "D.S. AL CODA".

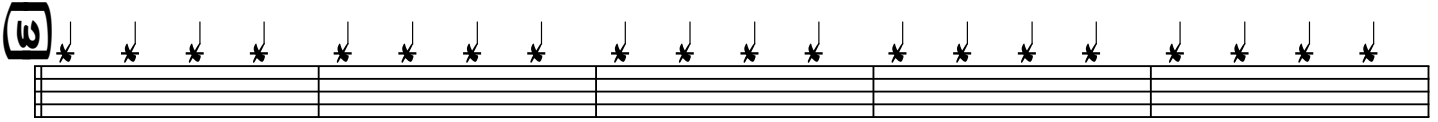


A musical staff with a bass clef and a repeat sign. Above the staff are 16 asterisks. A circled 'V' is placed above a quarter note in the middle of the staff.



A musical staff with a bass clef and a repeat sign. Above the staff are 16 asterisks. The staff contains a whole rest followed by a quarter note, a quarter note, and a quarter note.

3



A musical staff with a bass clef and a repeat sign. Above the staff are 16 asterisks. The staff contains a whole rest followed by a quarter note, a quarter note, and a quarter note.

DRUMS

FEEL IN

A musical staff with a bass clef. Above the staff, there are 16 asterisks, each with a downward-pointing arrow. A horizontal line with the text "FEEL IN" is positioned above the staff, spanning from the 7th asterisk to the 16th asterisk.

FEEL IN

A musical staff with 16 asterisks and downward arrows. A horizontal line with the text "FEEL IN" is positioned above the staff, spanning from the 7th asterisk to the 14th asterisk. At the end of the staff, there is a melodic line consisting of a quarter note, a dotted quarter note, and an eighth note.

SOLO

A musical staff with 16 asterisks and downward arrows. A horizontal line with the text "SOLO" is positioned above the staff, spanning from the 5th asterisk to the 6th asterisk. At the beginning of the staff, there is a melodic line consisting of a quarter note, a dotted quarter note, and an eighth note.

A musical staff with 16 asterisks and downward arrows.

A musical staff with 16 asterisks and downward arrows.

FEEL IN

A musical staff with 16 asterisks and downward arrows. A horizontal line with the text "FEEL IN" is positioned above the staff, starting from the 11th asterisk. A double bar line is located between the 10th and 11th asterisks.

A musical staff with 16 asterisks and downward arrows. At the end of the staff, there is a melodic line consisting of a quarter note, a dotted quarter note, and an eighth note.

A musical staff starting with a drum roll (a series of slanted lines) followed by a melodic line consisting of a quarter note, a dotted quarter note, and an eighth note.