

1ST ALT SAX

これが恋かしら

シンデレラ

arr. by HERO

Musical notation for the first staff, including a treble clef, a common time signature (C), and a key signature of one flat (Bb). It features a circled section marker 'A' above the first measure, a fermata over the second measure, and a circled section marker 'B' above the eighth measure. The dynamics marking *mp* is present below the staff.

Musical notation for the second staff, continuing the melody with various note values and slurs. The dynamics marking *mf* is present below the staff.

Musical notation for the third staff, including a circled section marker 'C' above the fifth measure. The dynamics marking *mp* is present below the staff.

Musical notation for the fourth staff, featuring a circled section marker 'D' above the first measure. The dynamics marking *mf* is present below the staff.

Musical notation for the fifth staff, including a circled section marker 'E' above the fifth measure and a circled section marker '6' above the eighth measure. The dynamics marking *mp* is present below the staff.

<CLA. SOLO>

Musical notation for the sixth staff, starting with a circled section marker 'F' above the first measure. It includes a circled section marker 'D' above the eighth measure. The dynamics marking *mp* is present below the staff.

Musical notation for the seventh staff, featuring a circled section marker 'G' above the fifth measure. The dynamics marking *mf* is present below the staff.

Musical notation for the eighth staff, including a circled section marker 'G' above the fifth measure. The dynamics marking *mf* is present below the staff.

Musical notation for the ninth staff, featuring a circled section marker 'A' above the fifth measure. The dynamics marking *mf* is present below the staff.

1ST ALT SAX

A 7(#5) D Fdim Em7 A7

[H] 8 [I] mp

[J] 8 [K] 7 pp

[L]

[M] 8

[N] 3 mf

[O] 2

[P] 2 f

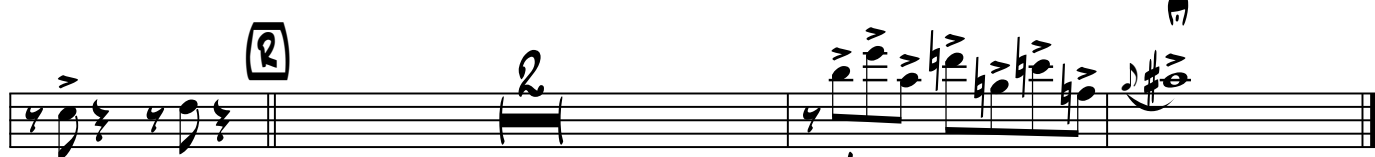
[P] mp mf

1ST ALT SAX

これが恋かしら ♪



mf



mf
POCO RIT.