

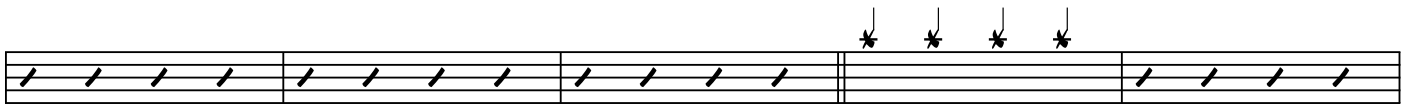
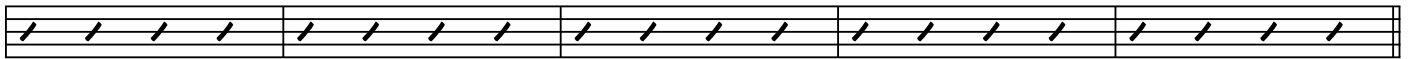
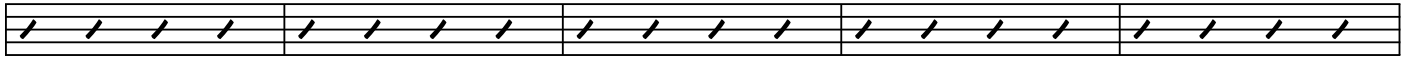
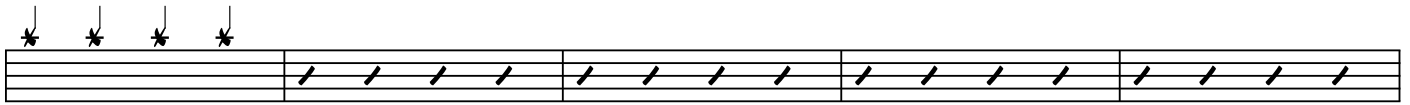
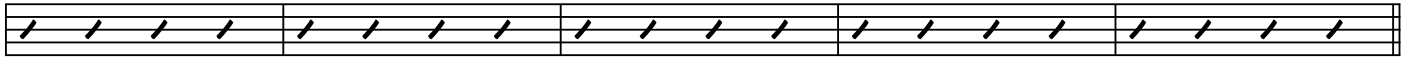
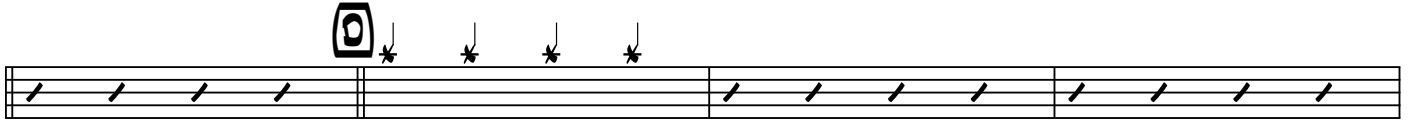
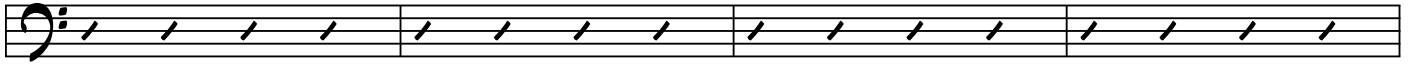
DRUMS

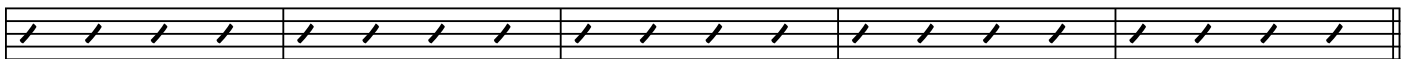
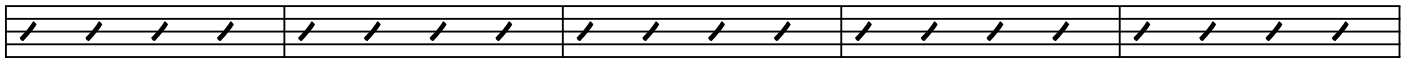
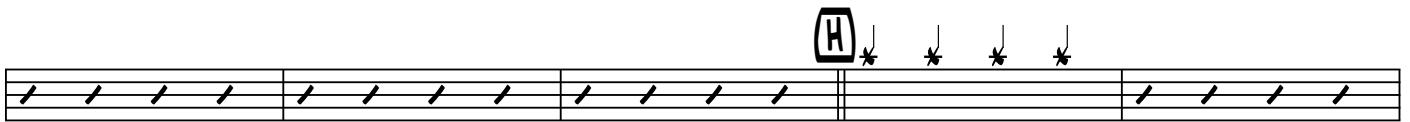
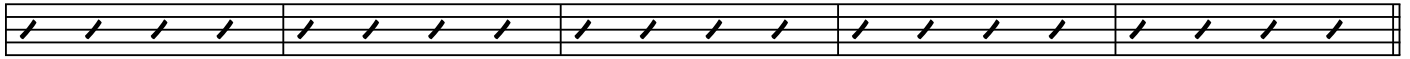
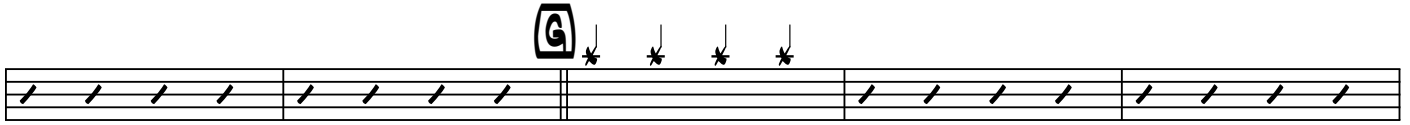
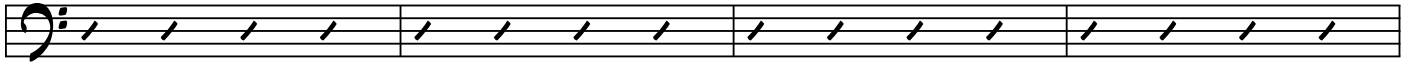
BOPTITUDE TEST

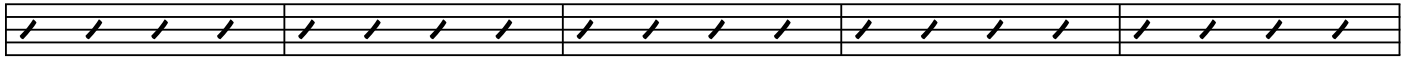
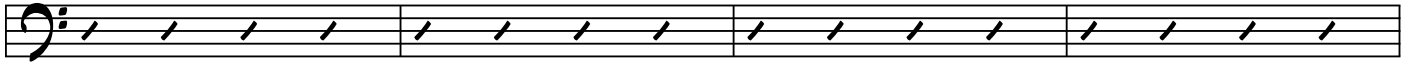
The Taylor/Fidyk Big Band

arr. by HERO

Drum notation for 'BOPTITUDE TEST'. The score is written on ten staves. The first staff begins with a bass clef and a common time signature (C). The notation includes various rhythmic patterns such as eighth notes, quarter notes, and sixteenth notes, as well as rests and slash marks. Section markers are present: 'A' with a repeat sign, 'B', and 'C'. Section 'C' is followed by the instruction 'To CODA'. The notation concludes with a double bar line and a final staff containing four asterisks with downward-pointing arrows, indicating a specific drum pattern.







D.S.

