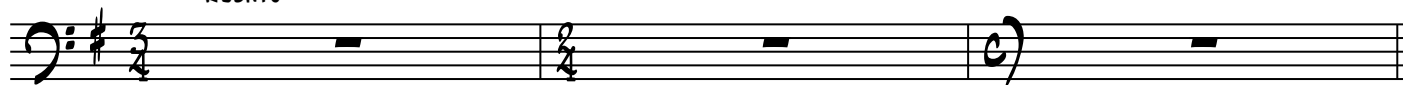


BASS

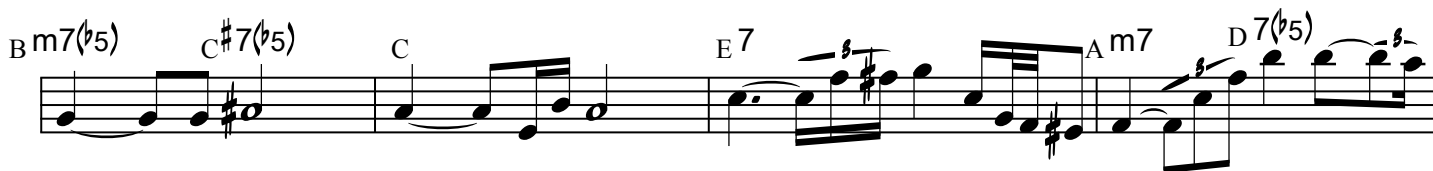
BEWITCHED (for vocal)

ARR. BY HERO

RUBATO



♩=60



BASS

BEWITCHED 2

Musical notation for the bass line of 'BEWITCHED 2'. The piece is in the key of D major (one sharp) and 2/4 time. The notation consists of two staves. The first staff contains five measures of music with the following notes and chords: Measure 1: D2 (quarter note), chord Bm7(b5); Measure 2: E2 (quarter note), chord Em7; Measure 3: A2 (quarter note), chord Am7; Measure 4: D3 (quarter note), chord D7sus4; Measure 5: G2 (quarter note), chord G7sus4. The second staff contains three measures: Measure 1: Rest; Measure 2: G2 (quarter note), chord G; Measure 3: C2 (quarter note), chord C. The piece ends with a double bar line.